

Annotation:

This operation bulletin contains amended information regarding structure and listing of assembly units and parts for gearbox control of BELARUS-920.4/952.4 tractor.

Content of changes:

Page 65. The table shall be amended. Pos. 13 of column Designation has got “70-1702125”, which shall be replaced with “A15.05.020”.

Pages 66 and 67 shall be replaced. Page 67a shall be introduced.

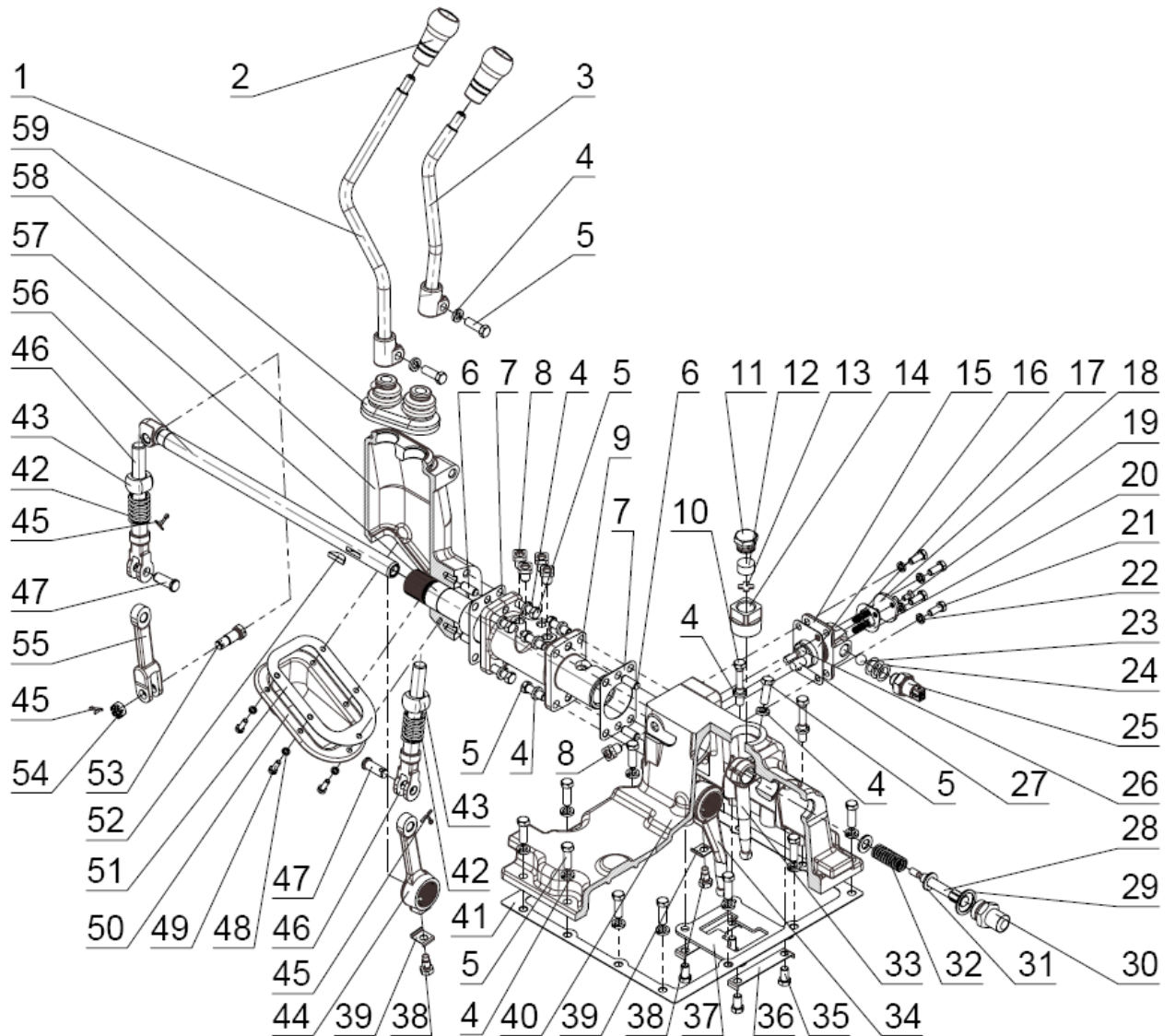


Figure 17.14 - Double-lever control mechanism of gearbox

**Group 17. Gearbox
Subgroup 1702. Double-lever control mechanism of gearbox**

Fig.	Pos.	Designation	Q-ty	Denomination
17.14		920-1702010-B	1	Gearbox control (4-9, 11-40, 42-59)
		920-1702050-A	1	Lever (2-5)
		920-1702060	1 ¹⁾	Lever (1, 2, 4, 5)
		952-1702060	1 ²⁾	Lever (1, 2, 4, 5)
		920-1702090-B	1	Housing (4-7, 9, 38, 39, 42-59)
		920-1702100	1	Housing (15, 17-20, 26, 27)
		50-1701130	1	Breather (11-14)
	1	920-1702040	1 ¹⁾	Lever
	1	952-1702040	1 ²⁾	Lever
	2	A15.05.020	1	Knob
	3	920-1702030-A	1	Lever
	4		23	Washer 10 OT OCT 37.001.115-75
	5		21	Bolt M10-6g x30.88.35.019 GOST 7796-70
	6	SHTSK 10x25	4	Dowel
	7	922-1702026	2	Gasket
	8	923-1702027	1	Blind plug
	9	920-1702012-B	1	Spacer
	10		2	Bolt M10-6g x60.88.35.019 GOST 7795-70
	11	50-4608059	1	Breather plug
	12	50-4608063	1	Filter
	13	50-4608062	1	Breather washer
	14	50-1701132	1	Breather housing
15	920-1702101	1	Housing	
16	920-1702102	1	Gasket	
17	80-3405044	2	Spring	
18	920-1702104	1	Cover	
19		2	B.M6-6g x14.58.019 GOST 17475-80	
20	920-1702103	1	Gasket	
21		4	Bolt M8-6gx20.88.35.019 GOST 7796-70	
22		4	Washer 8T OST 37.001.115-75	

**Group 17. Gearbox
Subgroup 1702. Double-lever control mechanism of gearbox**

Fig.	Pos.	Designation	Q-ty	Denomination
17.9	23	13,8-60	1	Ball
	24	50-1702048	3 ³⁾	Adjusting shim
	25		1	Disconnect switch BK 12-41 TU RB 37334210.015-97
	26	920-1702106	1	Pusher
	27	920-1702107	1	Pusher
	28	920-1702314	1	Screw
	29	80-1702098	1	Washer
	30	80C-1702302	1	Housing
	31		2	Washer C12.01.019 GOST 11371-78
	32	920-1702313	1	Spring
	33	70-1703011	1	Lever
	34	922-1702016	1	Lever
	35		4	Bolt M10-6gx18.88.35.019 GOST 7796-70
	36	50-1702107-A	2	Lock plate
	37	922-1702084	1	Plate
	38	922-1702021	2	Bolt
	39	50-1702107	2	Plate
	40	922-1702025-B	1	Cover
	41	50-1702026	1	Gasket
	42	77.37.117	2	Spring
	43	142-1702032	2	Сфера
	44	920-1702017	1	Lever
	45		3	Dowel 3,2x18.019 GOST 397-79
	46	80C-1702074	2	Yoke
	47		2	Pin 12x32 OST 37.001.163-75
	48		5	Washer 6T OST 37.001.115-75
	49		5	Screw B.M6-6gx12.58.019 GOST 17473-80
	50	922-1702023-B	1	Cover
	51	922-1702024	1	Gasket
52	SSH-611	1	Key	
53	80-1702108	1	Bolt	
54		1	Nut M12-6H.04.019 GOST 5919-73	
55	922-1702018	1	Yoke	
56	920-1702020-B	1	Shaft	
57	920-1702015-B	1	Pipe	
58	922-1702011-01	1	Housing	
59	922-1702019	1	Boot	

¹⁾ Hydraulic system distributor on oil tank

²⁾ Hydraulic system distributor control with joystick

³⁾ Max. q-ty. To be selected