



Annotation

This operation bulletin contains information on amendments to BELARUS tractor catalogues due to introduction of rear PTO 90-4202010 with a modified mechanism of band brake tightening.

Content of changes:

Group **42 Power take off**

Subgroup **4202 Rear power take off shaft**

Figures and sheets of group 42 Power take off shall be replaced in the respective catalogues (see table 1)

Table 1

Catalogue designation	Sheets to be replaced	Figures to be replaced
510-0000010 КДС	175, 177	77
570-0000010 КДС	257, 259	42.1
80X-0000010 КДС	133, 135	42.1
82-0000010 КДС	241, 243	42.1
826-0000010 КДС	209, 211	42.1
892-0000010 КДС	175, 177	42.1
900-0000010 КДС	235, 237	42.1
952.4-0000010-01 КДС	183, 185	42.1
952.5-0000010 КДС	211, 213	42.1

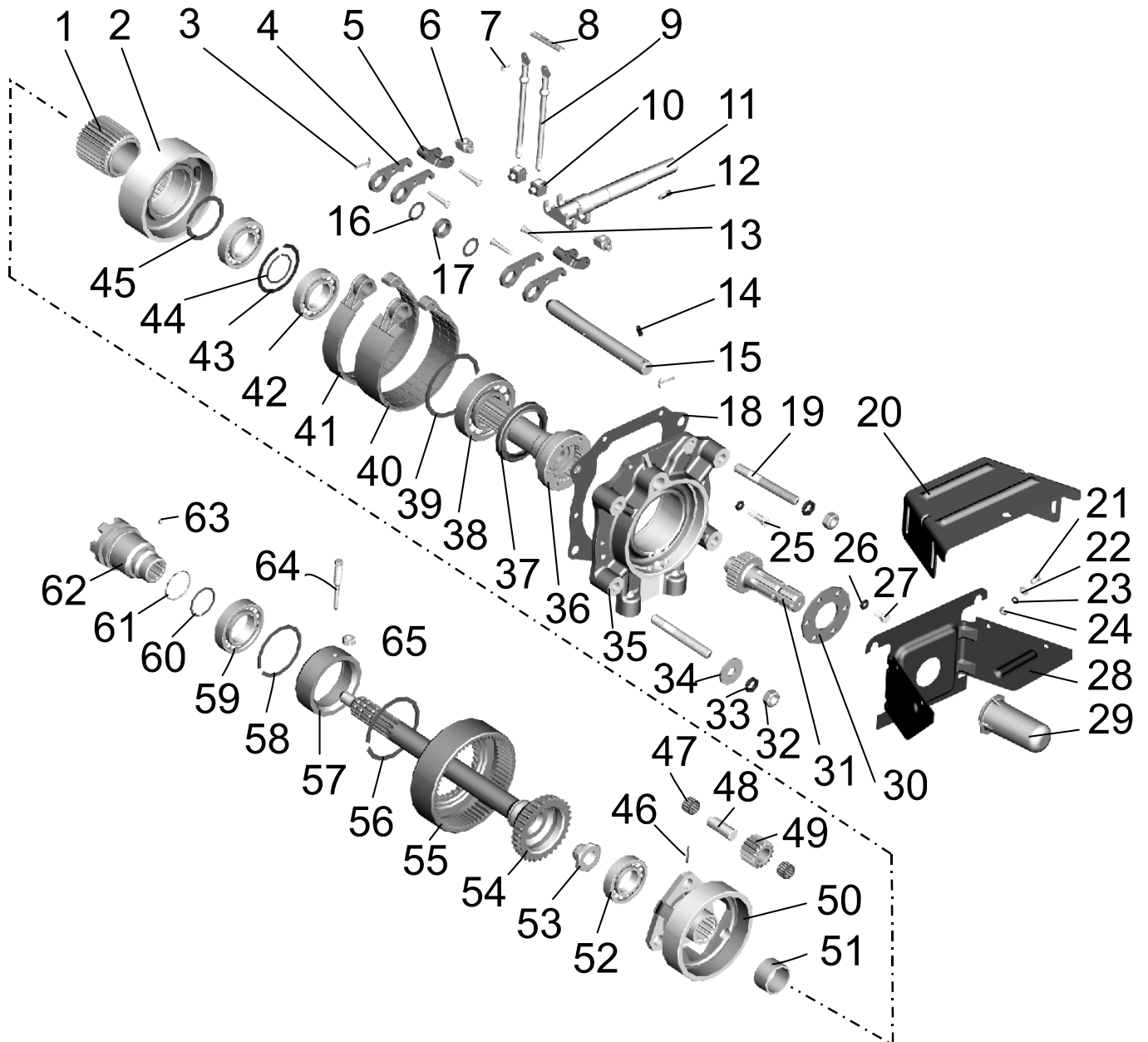


Figure (see table1) – Rear power take-off shaft 90-4202010

Group 42. Power take off
Subgroup 4202. Rear power take-off shaft

Fig.	Pos.	Designation	Q-ty	Denomination
See table 1		90-4202010	1	Rear power take-off shaft
	1	70-4202032	1	Sun gear
	2	85-4202033	1	Drum
	3	4.0x36.019 GOST 397-79	2	Cotter pin
	4	90-4202002	4	Lever
	5	90-4202001	2	Tie piece
	6	90-4202004	2	Pin
	7	3,2x18.019 GOST 397-79	2	Cotter pin
	8	80-4216039	1	Stopper
	9	70-4216028-Б	2	Screw
	10	50-4216034	2	Screw axle
	11	50-4216018	1	Control shaft
	12	СШ-611	1	Key 6x11
	13	90-4202003	4	Pin
	14	A.8x20.65Г GOST 14229-91	1	Dowel
	15	70-4202072-Б	1	Center pin
	16	50-3406037	2	Washer
	17	80-1601337	1	Washer
	18	50-4202092А	1	Gasket
	19	50X-2401028	4	Double-end bolt
	20	80-4202092	1	Cover
	21	M8-6gx16.88.35.019 GOST 7796-70	4	Bolt
	22	C8.01.019 GOST 11371-78	4	Washer
	23	8T OCT 37.001.115-75	4	Washer
	24	M8-6H.6.019 GOST 5915-70	4	Nut
	25	M10-6gx35.88.35.019 GOST 7796-70	6	Bolt
	26	10 OT OST 37.001.115-75	12	Washer
	27	M10-6gx20.88.35.019 GOST 7796-70	4	Bolt
	28	80-4202091	1	Housing
	29	80-4202101	1	Cap
	30	80-4202081-А	1	Plate
	31	80-4202019-Б	1	Shaft end (8 splines)
		80-4202019-Б-01	1	Shaft end (6 splines) (on order)
		80-4202019-Б-02	1	Shaft end (21 splines) (on order)
	32	M16-x1,5-6H.6.019 GOST 5915-70	4	Nut
	33	16 OT OST 37.001.115-75	4	Washer
	34	C16.01.019 GOST 6958-78	2	Washer
	35	80-4202042-Б-01	1	Cover
	36	80-4202017-Б	1	Shaft
	37	2.2-80x105-1 GOST 8752-79	1	Sealing ring
	38	60310А GOST 7242-81	1	Bearing
	39	2С110 GOST 13941-86	1	Ring
	40	85-4202100-01	1	Band
	41	85-4202100	1	Band
	42	209А GOST 8338-75	2	Bearing
	43	2С85 GOST 13941-86	1	Ring
44	2С50 GOST 13940-86	1	Ring	
45	2С68 GOST 13940-86	1	Ring	
46	70-4202431	3	Dowel	



Group 42. Power take off
Subgroup 4202. Rear power take-off shaft

Fig.	Pos.	Designation	Q-ty	Denomination
See table 1	47	SKF K20x26x17	6	Bearing
	48	70-4202026	3	Satellite gear shaft
	49	70-4202024	3	Satellite gear
	50	85-4202065	1	Carrier
	51	70-4202077	1	Bushing
	52	208A GOST 8338-75	1	Bearing
	53	70-4202083-A	1	Nut
	54	70-4202044-Б	1	Shaft
	55	70-4202043	1	Sun gear
	56	2C110 GOST 13941-86	1	Ring
	57	50-4202066-A	1	Cage
	58	2C90 GOST 13941-86	1	Ring
	59	210A VIII GOST 8338-75	1	Bearing
	60	2C50 GOST 13940-86	1	Ring
	61	A61.03.002	1	Ring
	62	50-4202046-Б	1	Shift collar
	63	7,938-100 GOST 3722-81	1	Ball
64	50-4202068	1	Set screw	
65	M12x1,25.6H.6 GOST 5915-70	1	Nut	



Group **42 Power take off**

Subgroup **4216 Rear power take-off shaft control**

In tables of subgroup 4216 Rear power take off shaft control of respective catalogues (see table 2) lines shall be replaced as follows

Table 2

Catalogue designation	Sheet	Available	Shall be replaced with
510-0000010 КДС	183	pos.22 - 70-4216028	pos.22 - 70-4216028-01
570-0000010 КДС	267	pos.12 - 70-4216028	pos.12 - 70-4216028-01
80X-0000010 КДС	139	pos.12 - 70-4216028	pos.12 - 70-4216028-01
82-0000010 КДС	251	pos.12 - 70-4216028	pos.12 - 70-4216028-01
826-0000010КДС	221	pos.18 - 70-4216028	pos.18 - 70-4216028-01
892-0000010КДС	181	pos.12 - 70-4216028	pos.12 - 70-4216028-01
900-0000010КДС	247	pos.12 - 70-4216028	pos.12 - 70-4216028-01
952.4-0000010-01 КДС	193	pos.18 - 70-4216028	pos.18 - 70-4216028-01
952.5-0000010 КДС	221	pos.18 - 70-4216028	pos.18 - 70-4216028-01