



### Annotation

This operation bulletin contains information on amendments to BELARUS tractor catalogues due to introduction of rear PTO 920-4202010 with a modified mechanism of band brake tightening.

### Content of changes:

Group **42 Power take off**

---

Subgroup **4202 Rear power take-off shaft**

---

Figures and sheets of group 42 Power take off shall be replaced in the respective catalogues (see table 1)

Table 1

Catalogue designation	Sheets to be replaced	Figures to be replaced
570-0000010 КДС	261, 263	42.2
82-0000010 КДС	245, 247	42.2
826-0000010КДС	213,215	42.2
900-0000010КДС	239, 241	42.2
92П-0000010КДС	153, 155	42.1
921-0000010КДС	163, 165	42.1
922-0000010 КДС	189, 191	42.2
922.5-0000010 КДС	199, 201	42.2
923-0000010 КДС	271, 273	101
923.4-0000010 КДС	261, 263	42.2
923.5-0000010 КДС	195, 197	42.2
952.4-0000010-01 КДС	187, 189	42.2
952.5-0000010 КДС	215, 217	42.2
1021.3-0000010 КДС	181, 183	42.1
1021.5-0000010 КДС	199, 201	42.1

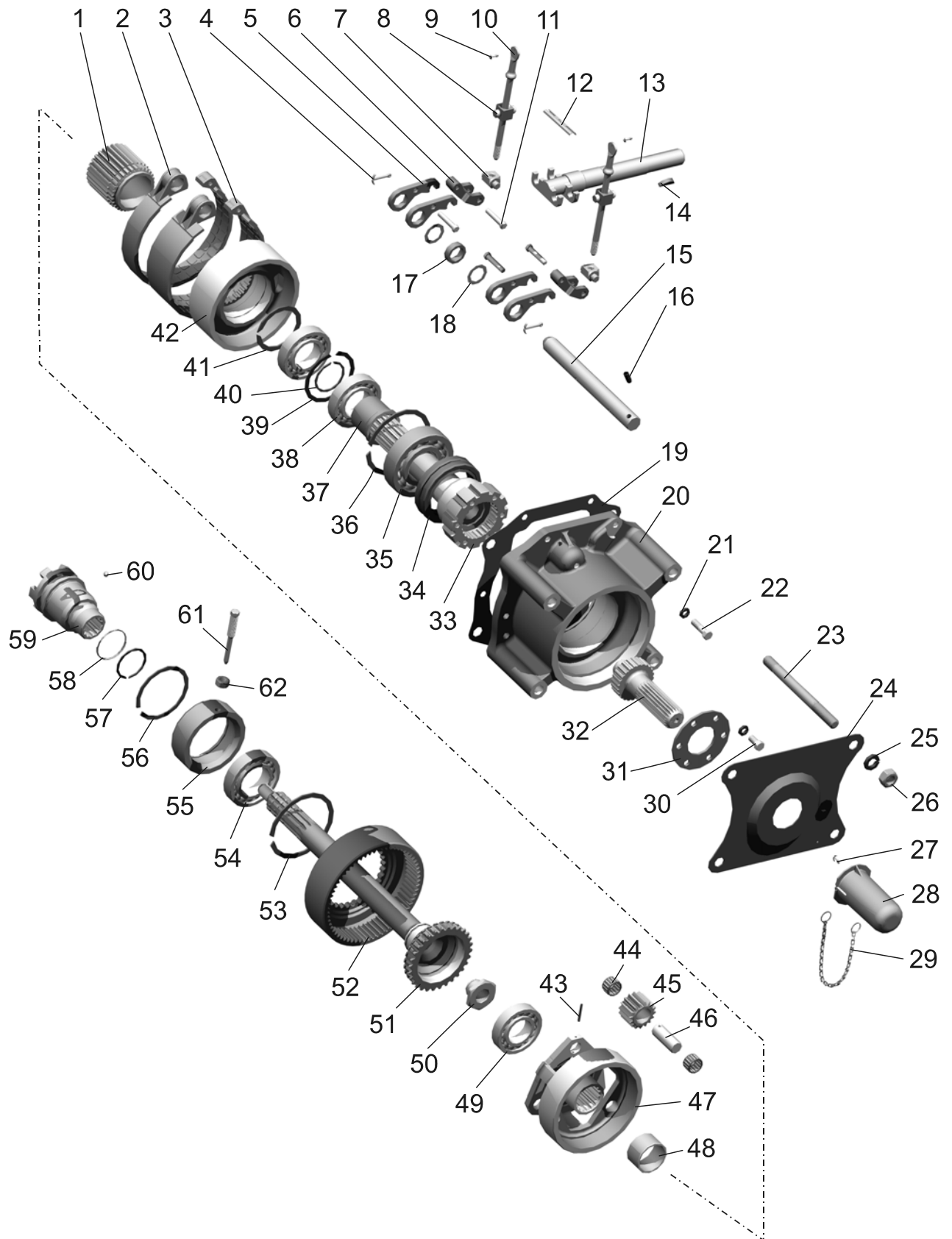


Figure (see. table 1) – Rear power take-off shaft 920-4202010

**Group 42. Power take off**  
**Subgroup 4202. Rear power take-off shaft**

Fig.	Pos.	Designation	Q-ty	Denomination
See table 1		<b>920-4202010</b>	1	Power take-off shaft
	1	70-4202032	1	Sun gear
	2	85-4202100	1	Band
	3	85-4202100-01	1	Band
	4	4,0x36.019 GOST 397-79	2	Cotter pin
	5	90-4202002	4	Lever
	6	90-4202001	2	Tie piece
	7	90-4202004	2	Pin
	8	50-4216034	2	Screw axle
	9	3,2x18.019 GOST 397-79	2	Cotter pin
	10	70-4216028-Б	2	Screw
	11	90-4202003	4	Pin
	12	80-4216039	1	Stopper
	13	50-4216018	1	Control shaft
	14	СШ-611	1	Key 6x11
	15	70-4202072-Б	1	Center pin
	16	A.8x20.65Г GOST 14229-91	1	Dowel
	17	80-1601337	1	Washer
	18	50-3406037	2	Washer
	19	50-4202092A	1	Gasket
	20	1221-4202042-01	1	Cover
	21	10 OT OST 37.001.115-75	12	Washer
	22	M10-6gx35.88.35.019 GOST 7796-70	6	Bolt
	23	1221-4202028	4	Double-end bolt
	24	1321-4202180	1	Plate
	25	16 OT OST 37.001.115-75	4	Washer
	26	M16-x1,5-6H.6.019 GOST 5915-70	4	Nut
	27	2,5x12.019 GOST 397-79	1	Cotter pin
	28	80-4202101	1	Cap
	29	70-4235035	1	Chain
	30	M10-6gx20.88.35.019 GOST 7796-70	6	Bolt
	31	80-4202081-A	1	Plate
	32	80-4202019-Б	1	Shaft end (8 splines)
		80-4202019-Б-01	1	Shaft end (6 splines) (on order)
		80-4202019-Б-02	1	Shaft end (21 splines) (on order)
	33	1221-4202017	1	Shaft
	34	2.2-80x105-1 GOST 8752-79	2	Sealing ring
	35	60310A GOST 7242-81	1	Bearing
	36	2C110 GOST 13941-86	1	Ring
	37	1221-4202077	1	Bushing
	38	209A GOST 8338-752	2	Bearing
	39	C85 GOST 13941-86	1	Ring
	40	2C50 GOST 13940-86	1	Ring
	41	2C68 GOST 13940-86	1	Ring
	42	85-4202033	1	Drum
	43	70-4202431	3	Dowel
	44	SKF K20x26x17	6	Bearing
	45	70-4202024	3	Satellite gear
	46	70-4202026	3	Satellite gear shaft
	47	85-4202065	1	Carrier
48	70-4202077	1	Bushing	
49	208A GOST 8338-75	1	Bearing	
50	70-4202083-A	1	Nut	

**Group 42. Power take off**  
**Subgroup 4202. Rear power take-off shaft**

<b>Fig.</b>	<b>Pos.</b>	<b>Designation</b>	<b>Q-ty</b>	<b>Denomination</b>
See table 1	51	70-4202044-Б	1	Shaft
	52	70-4202043	1	Sun gear
	53	2С110 GOST 13941-86	1	Ring
	54	210АУШ1 GOST 8338-75	1	Bearing
	55	50-4202066-А	1	Cage
	56	2С90 GOST 13941-86	1	Ring
	57	2С50 GOST 13940-86	1	Ring
	58	А61.03.002	1	Ring
	59	50-4202046-Б	1	Shift collar
	60	7,938-100 GOST 3722-81	1	Ball
	61	50-4202068	1	Set screw
	62	M12x1,25.6H.6 GOST 5915-70	1	Nut

Group **42 Power take off**

Subgroup **4216 Rear power take-off shaft control**

Table 2

<b>Catalogue designation</b>	<b>Sheet</b>	<b>Available</b>	<b>Shall be replaced with</b>
570-0000010 КДС	267	pos.12 - 70-4216028	pos.12 - 70-4216028-01
82-0000010 КДС	251	pos.12 - 70-4216028	pos.12 - 70-4216028-01
826-0000010КДС	219	pos.12 - 70-4216028	pos.12 - 70-4216028-01
900-0000010КДС	247	pos.12 - 70-4216028	pos.12 - 70-4216028-01
92П-0000010КДС	157	pos.12 - 70-4216028	pos.12 - 70-4216028-01
921-0000010КДС	169	pos.28 - 70-4216028	pos.28 - 70-4216028-01
922-0000010 КДС	193	pos.18 - 70-4216028	pos.18 - 70-4216028-01
922.5-0000010 КДС	203	pos.18 - 70-4216028	pos.18 - 70-4216028-01
923.4-0000010 КДС	265	pos.18 - 70-4216028	pos.18 - 70-4216028-01
923.5-0000010 КДС	199	pos.18 - 70-4216028	pos.18 - 70-4216028-01
952.4-0000010-01 КДС	193	pos.18 - 70-4216028	pos.18 - 70-4216028-01
952.5-0000010 КДС	219	pos.18 - 70-4216028	pos.18 - 70-4216028-01
1021.3-0000010 КДС	187	pos.10 - 70-4216028	pos.10 - 70-4216028-01
1021.5-0000010 КДС	203	pos.10 - 70-4216028	pos.10 - 70-4216028-01